



# User Manual

MODEL: CESC Home APP

CESC NEW ENERGY TECHNOLOGY CO., Ltd.

[www.cescpower.com](http://www.cescpower.com)

xxxxxxxxx

# Contents

<b>01</b>	<b>Brief introduction</b>	<b>02</b>
1.1	Purpose	02
1.2	Scope	02
<b>02</b>	<b>Download APP</b>	<b>02</b>
2.1	iOS	02
2.2	Android	02
<b>03</b>	<b>Account registration</b>	<b>03</b>
3.1	Account registration and login	03
3.2	Forget password	03
<b>04</b>	<b>Orion Devices Operation Guide</b>	<b>04</b>
4.1	Create plant	05
4.2	WiFi network configuration	06
4.3	Introduction of APP	10
4.3.1	Home page	11
4.3.2	Flow page	13
4.3.3	Equipment page	14
<b>05</b>	<b>Mars/Saturn/Venus Series Operation Guide</b>	<b>16</b>
5.1	Create plant	16
5.2	WiFi network configuration	17
5.3	Introduction of APP	20
5.3.1	Home page	21
5.3.2	Flow page	23
5.3.3	Equipment page	24

01 Brief introduction

1.1 Purpose

This manual gives a brief introduction to the main functions of **CESC Home APP**. Provide users with reference and assistance to familiarize with the APP quickly.

1.2 Scope

This manual is suitable for CESC users, pattern vendors and device maintenance personnel who use our device.

02 Download APP

2.1 iOS

Download **CESC Home** on the App Store of iOS or scan the QR code as below.



Ways 1: Download CESC Home App on the Apple store

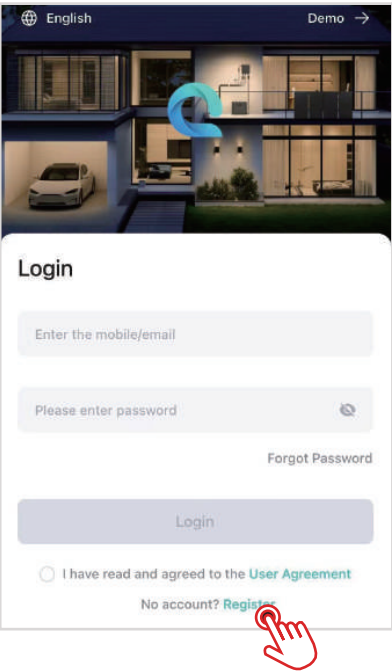
Ways 2: Download CESC Home App by scanning QR code for iOS users

2.2 Android

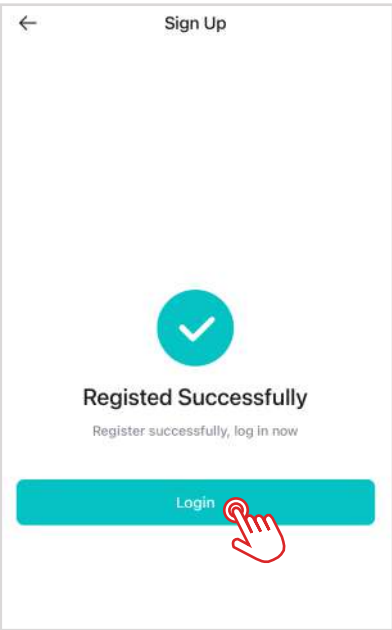
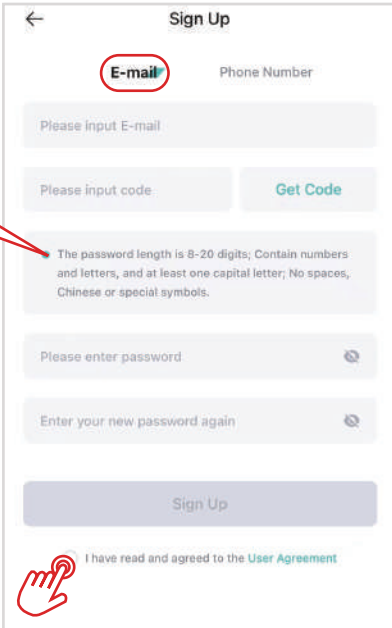
Download **CESC Home** on the **Google Play Store** of android phone .

03 Account registration

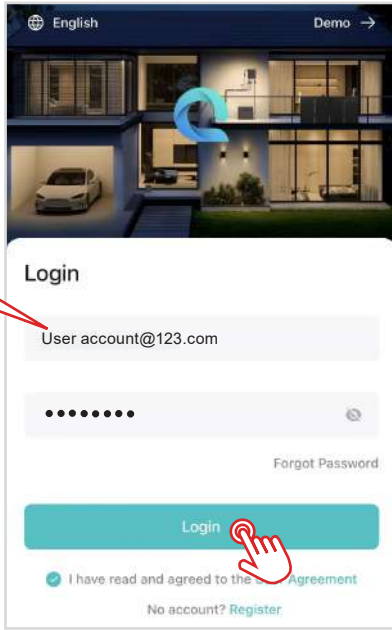
3.1 Account registration and log in



The password length is 8-20 digits; Contain numbers and letters, and at least one capital letter; No spaces Chinese or special symbols.  
For example: Abcd1234



Fill in your account and password which you've registered. Click the box before the "User Agreement" then click "Login".

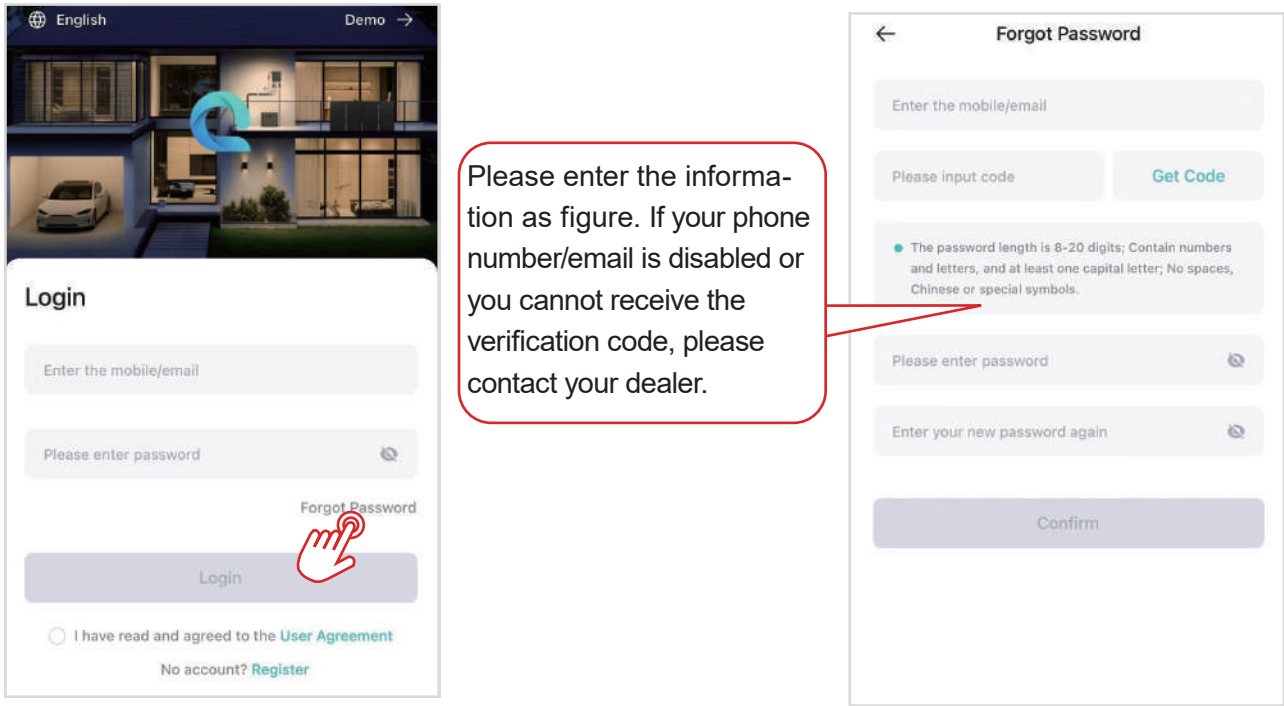


NOTE

If your email is disabled or you cannot receive the verification code, please contact your dealer. You can login after entering the correct account and password.

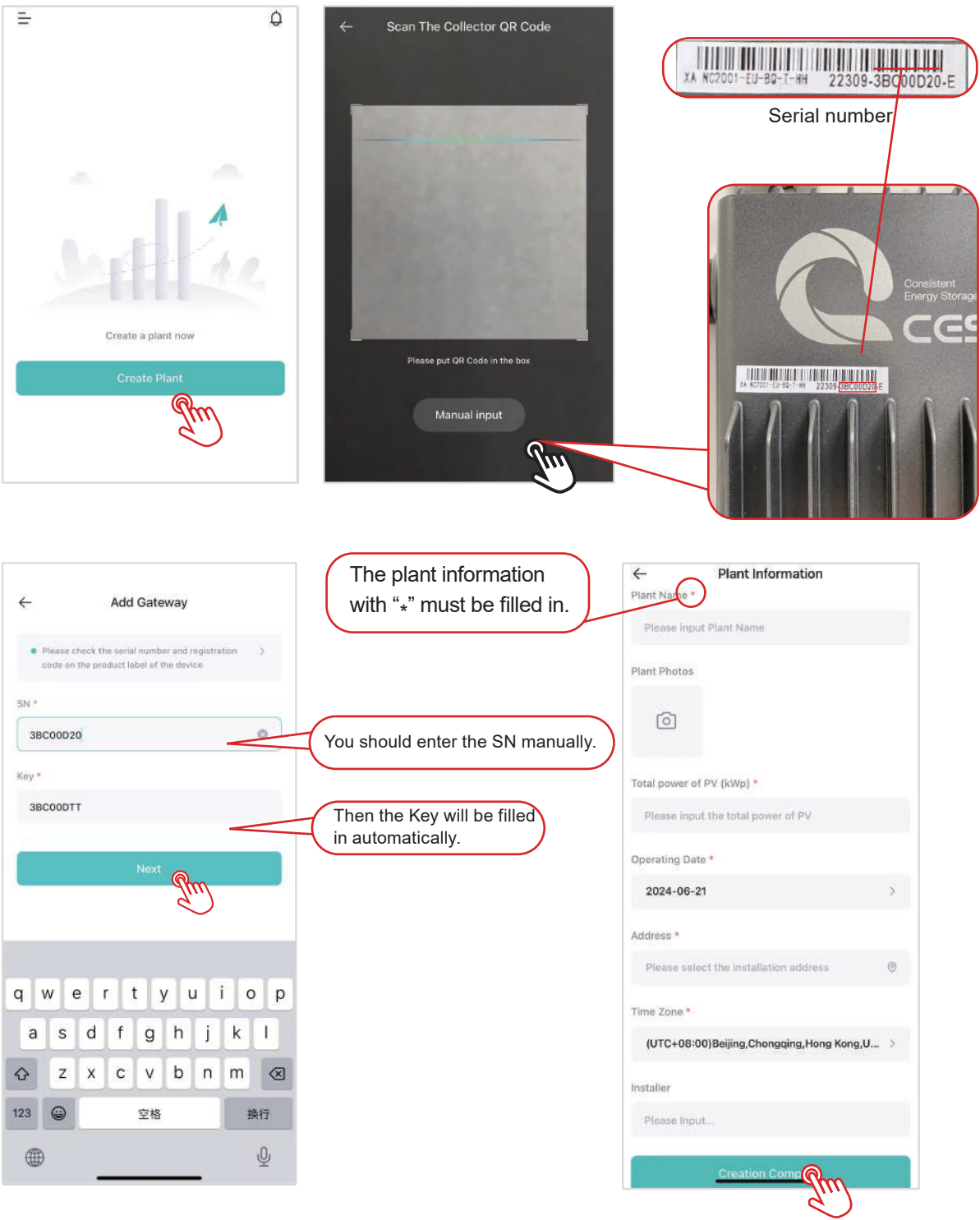
3.2 Forget password

If you cannot remember your password, please refer to the following instruction.



04 Orion Devices Operation Guide

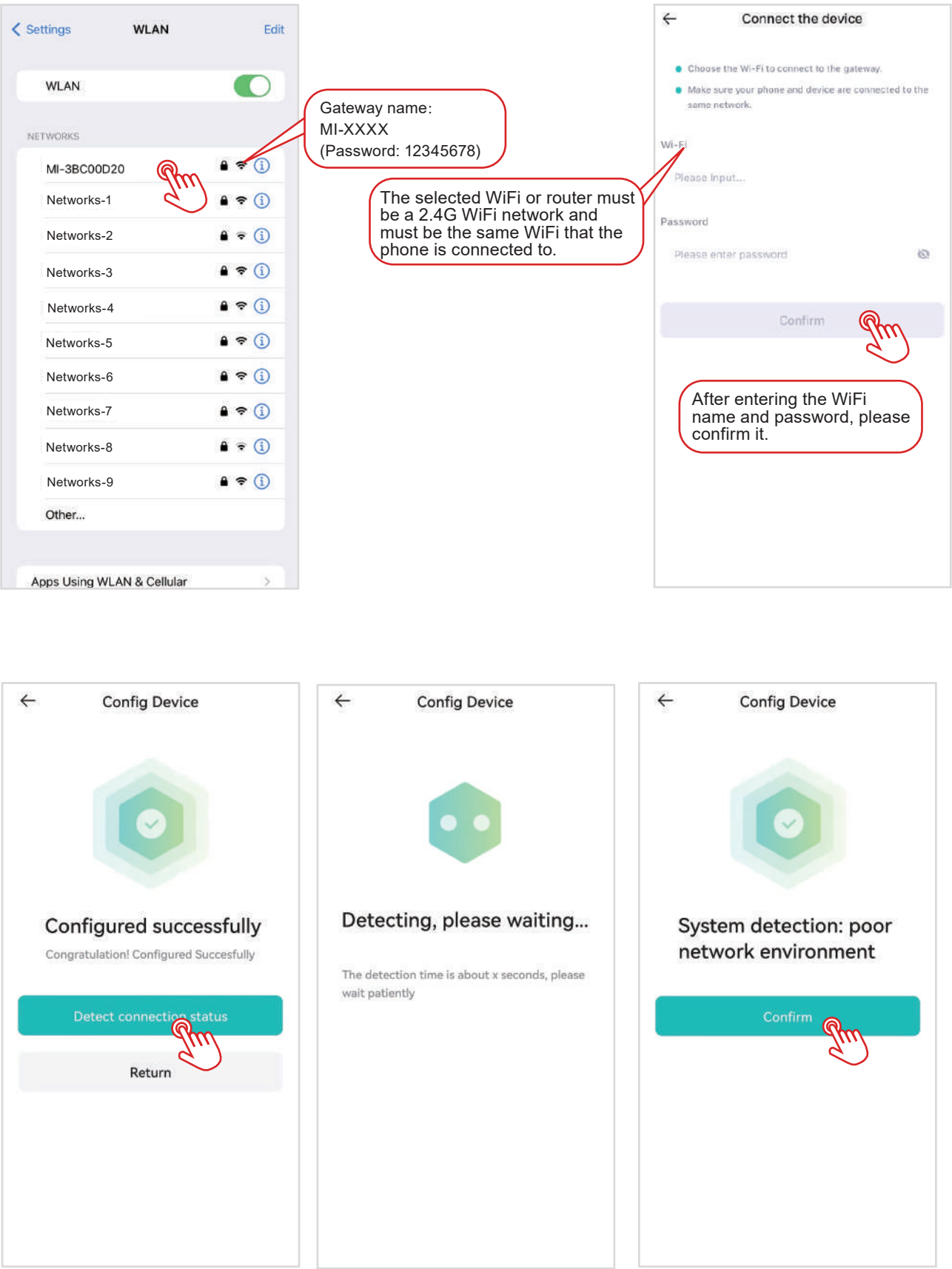
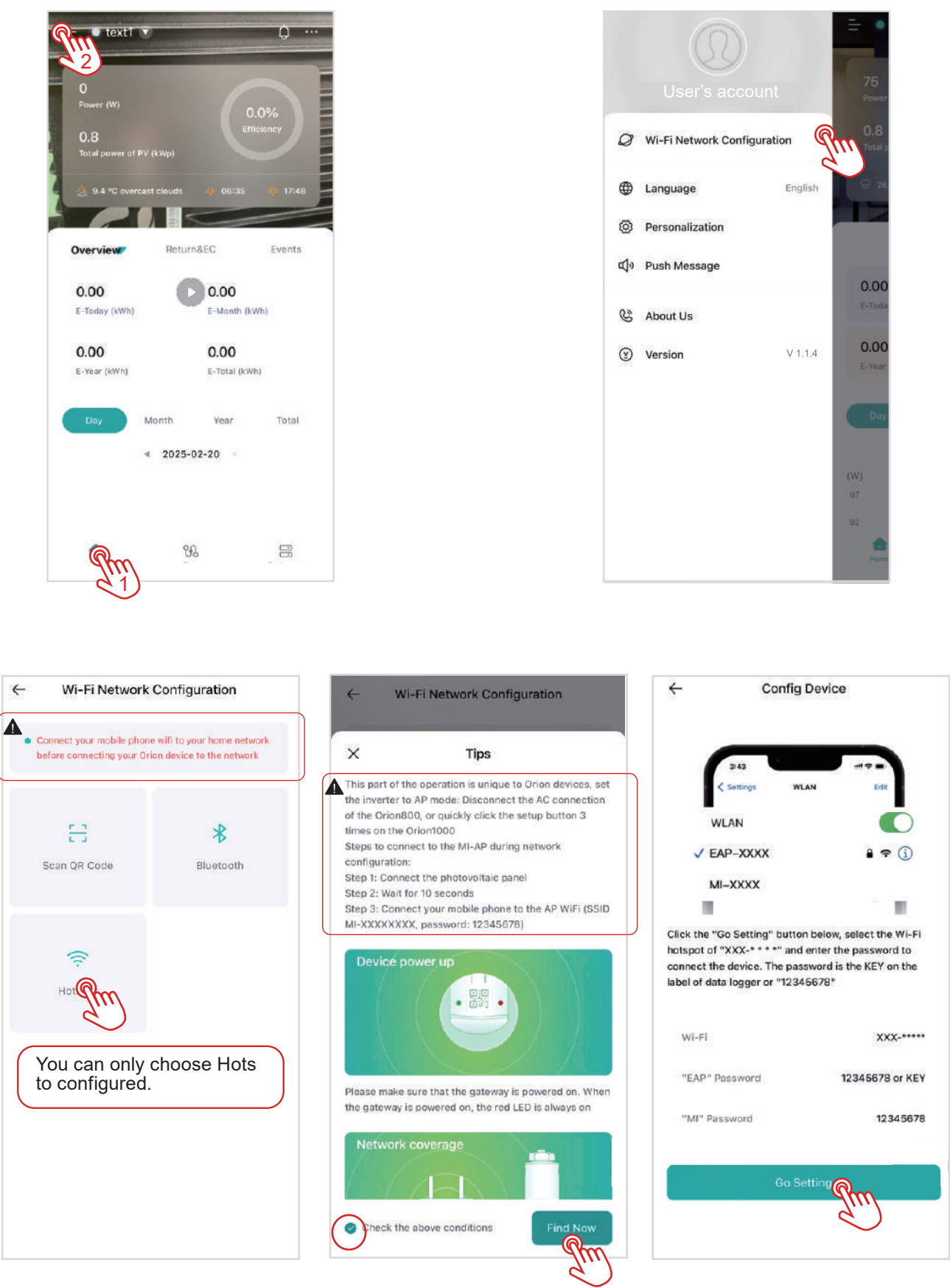
4.1 Creat plant

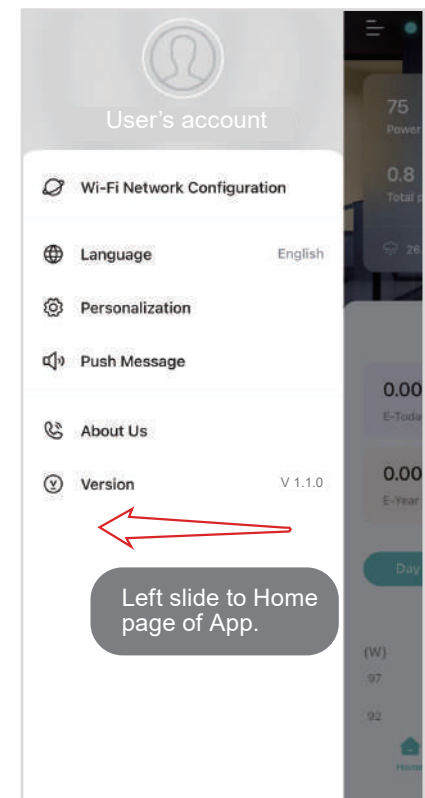
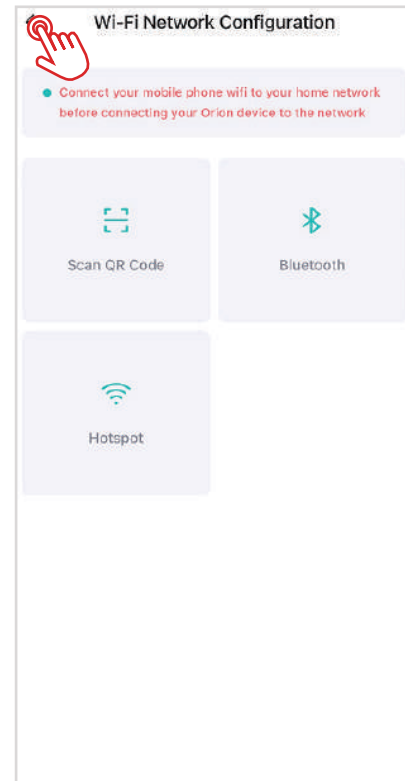
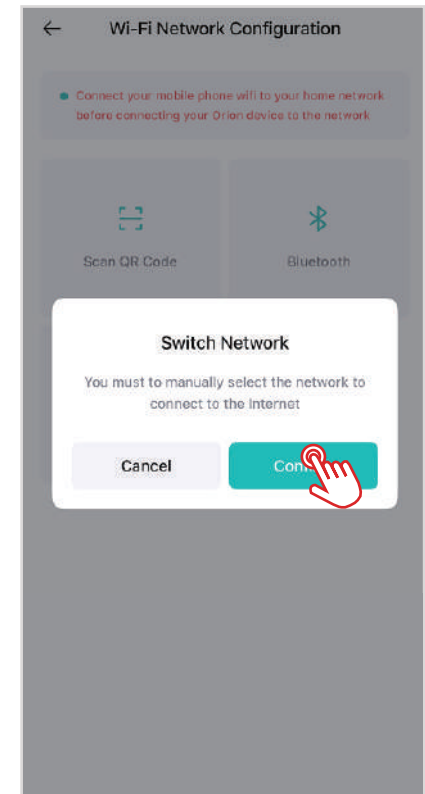


NOTE

After creating successfully, it will return to the main interface automatically.

4.2 WiFi network configuration

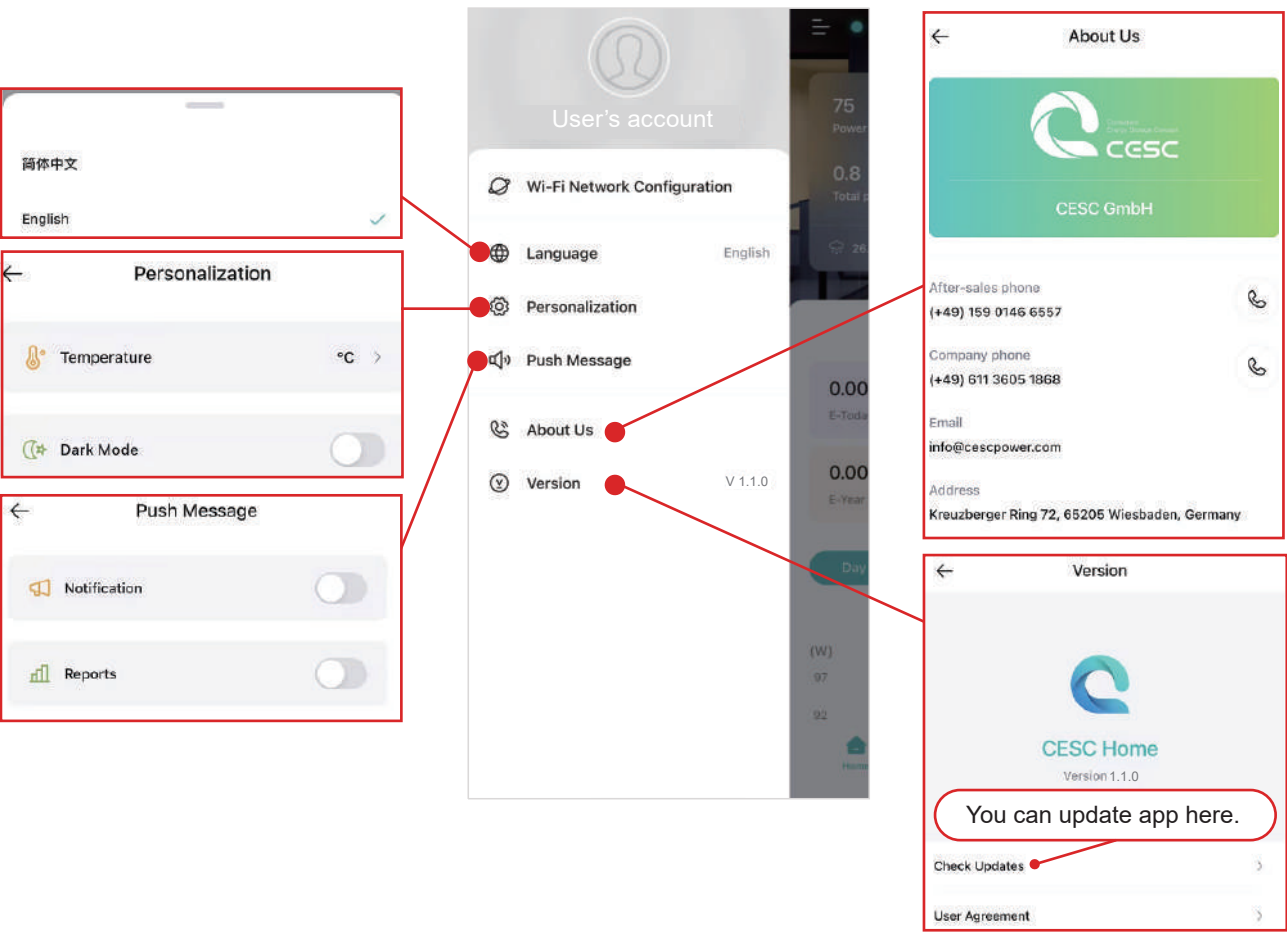




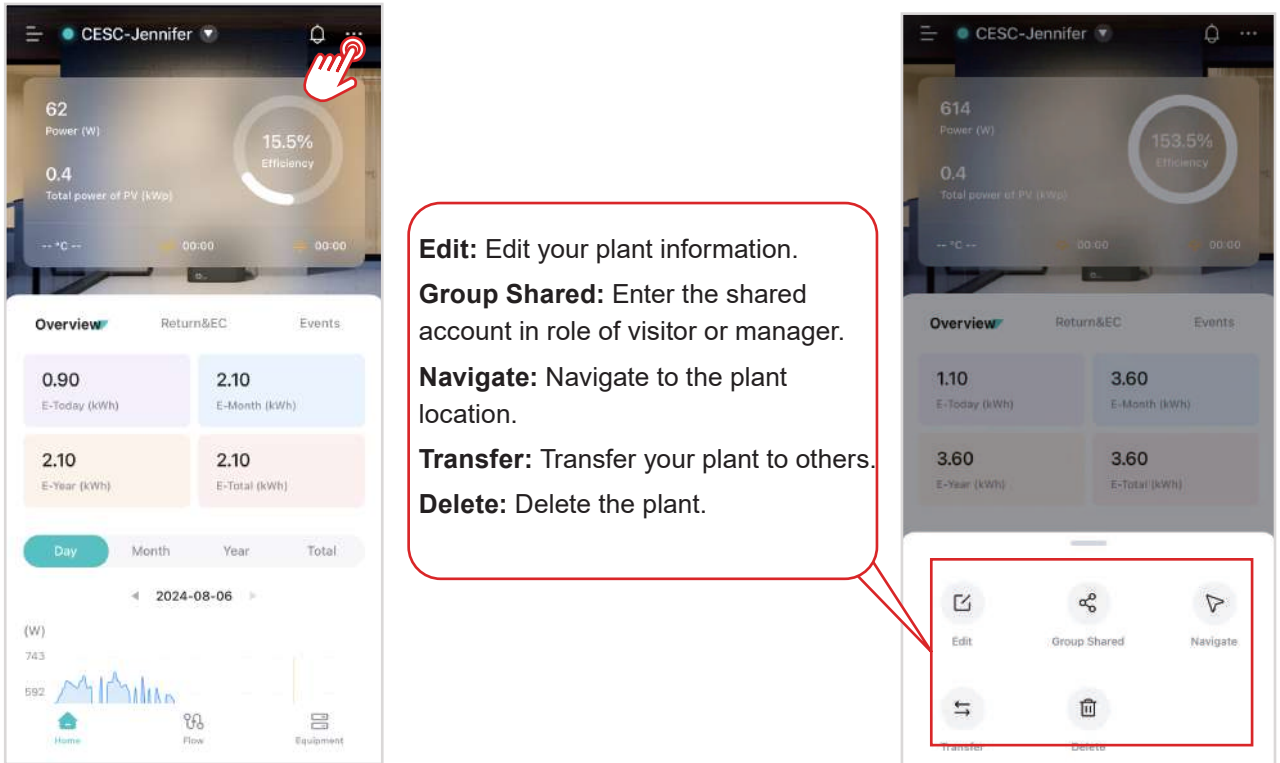
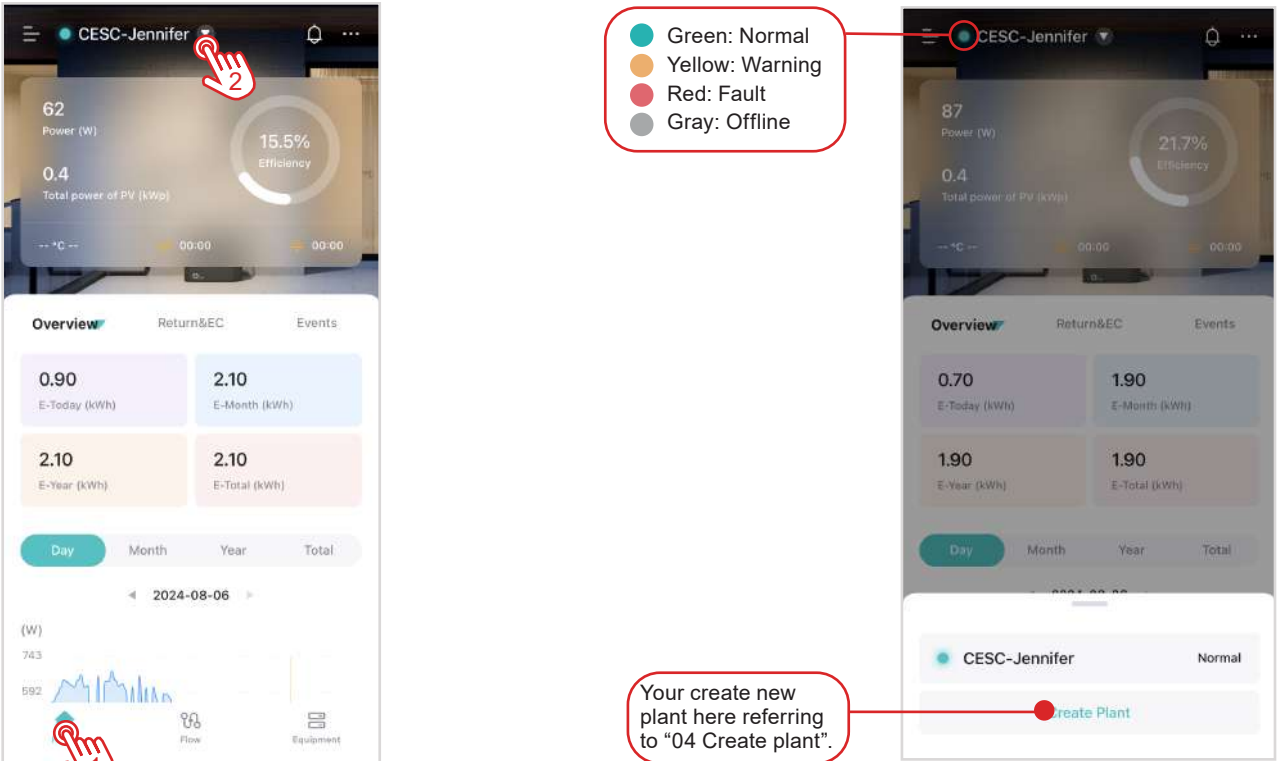
⚠ After configuring successfully, you must connect the AC cable of inverter to socket.



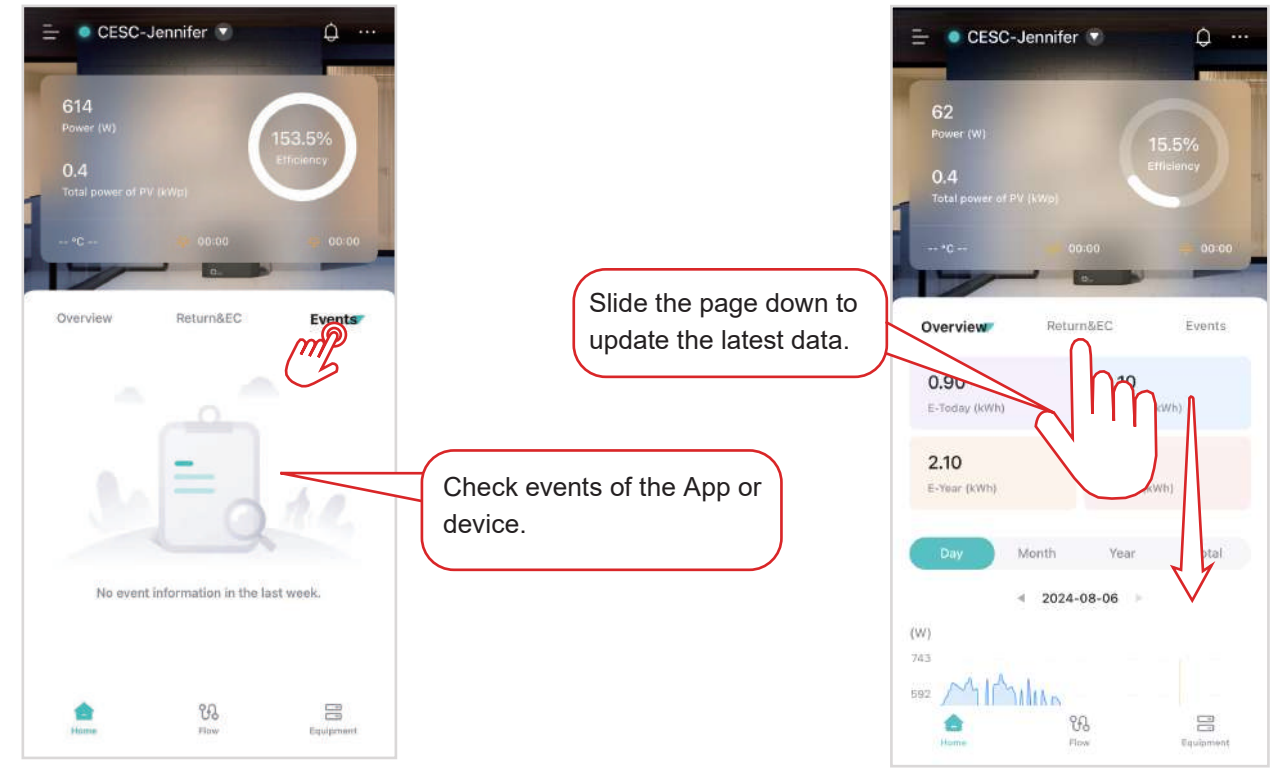
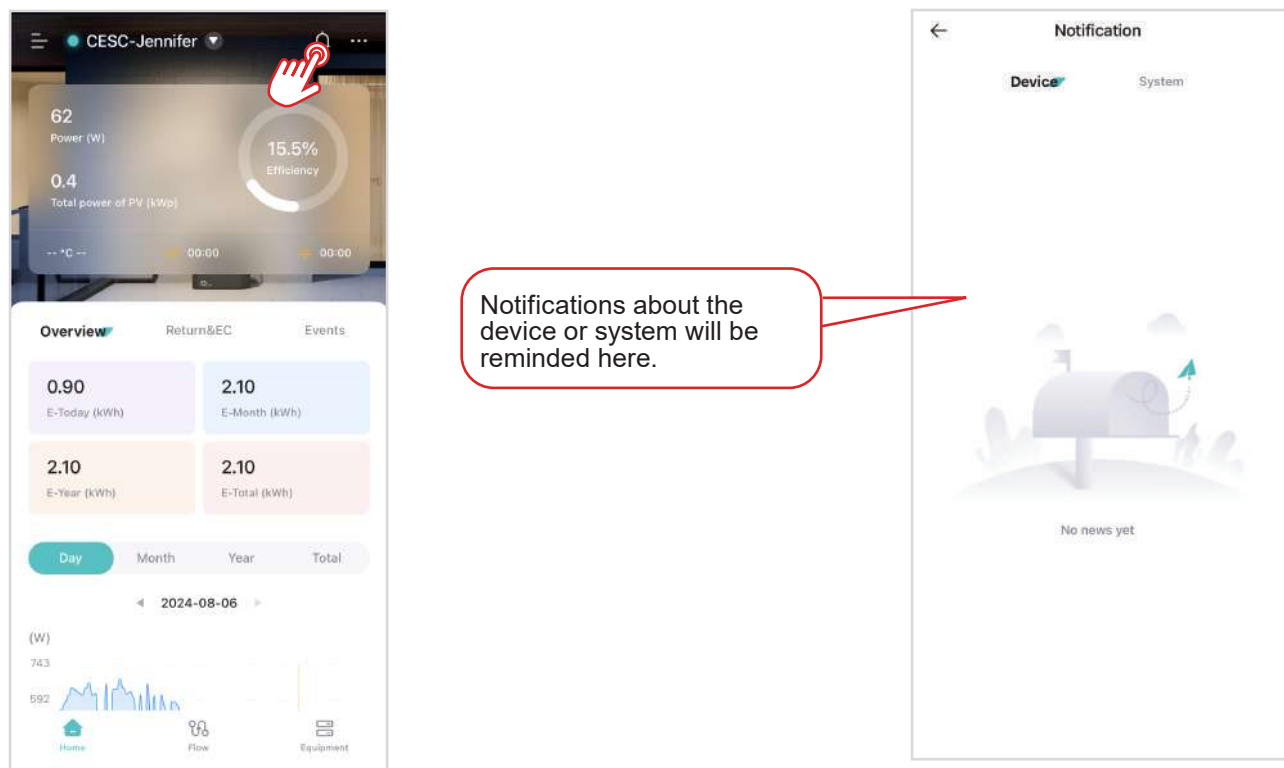
4.3 Introduction of APP



4.3.1 Home page

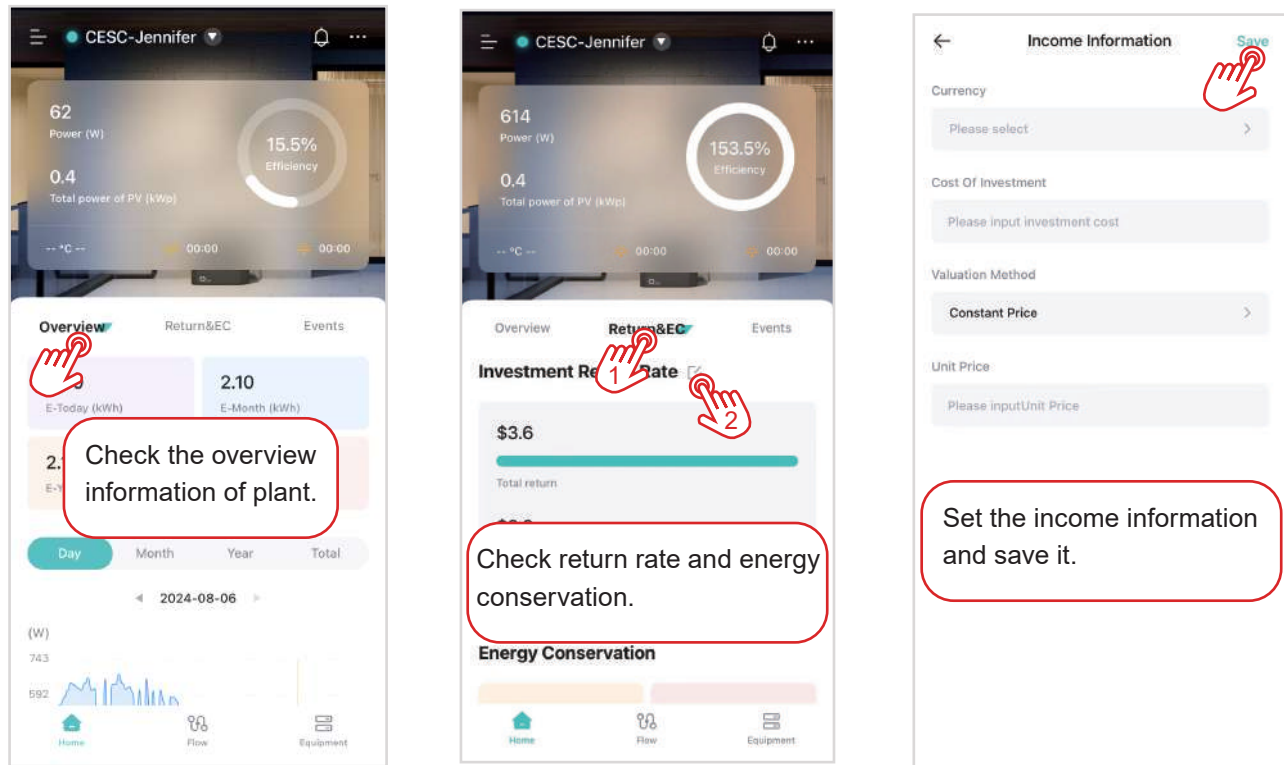


**Edit:** Edit your plant information.  
**Group Shared:** Enter the shared account in role of visitor or manager.  
**Navigate:** Navigate to the plant location.  
**Transfer:** Transfer your plant to others.  
**Delete:** Delete the plant.



4.3.2 Flow page

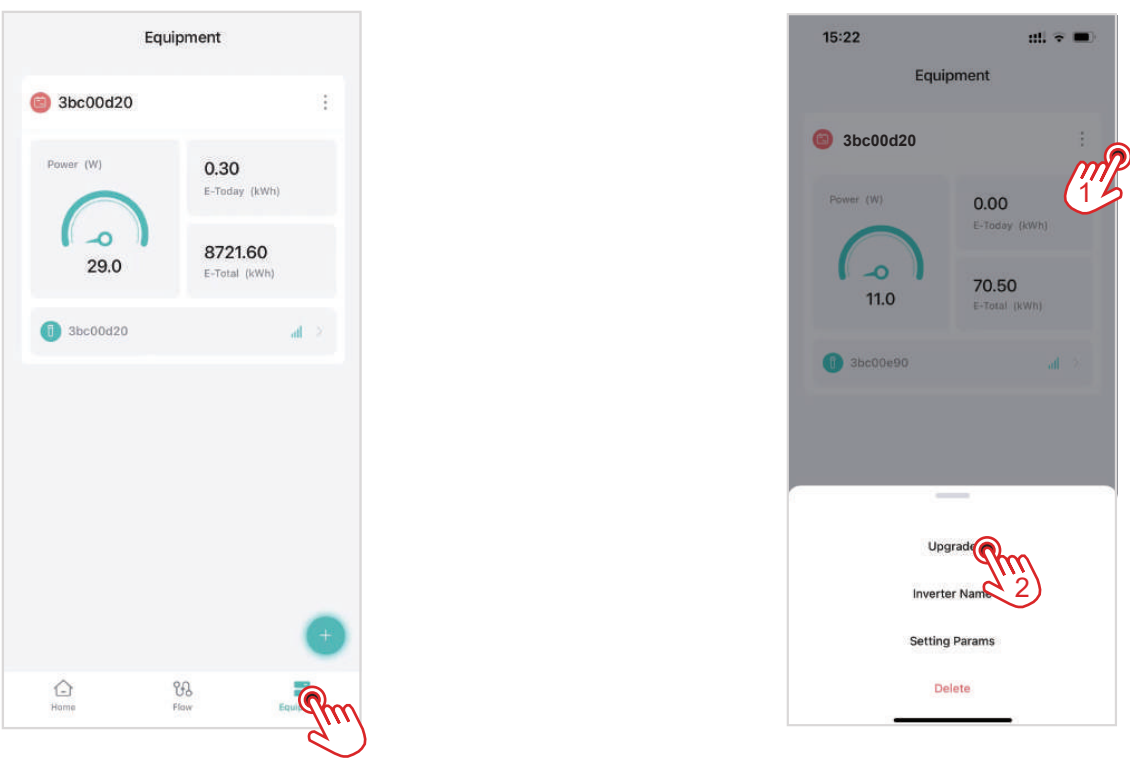
You can check energy flow on **Flow** page.



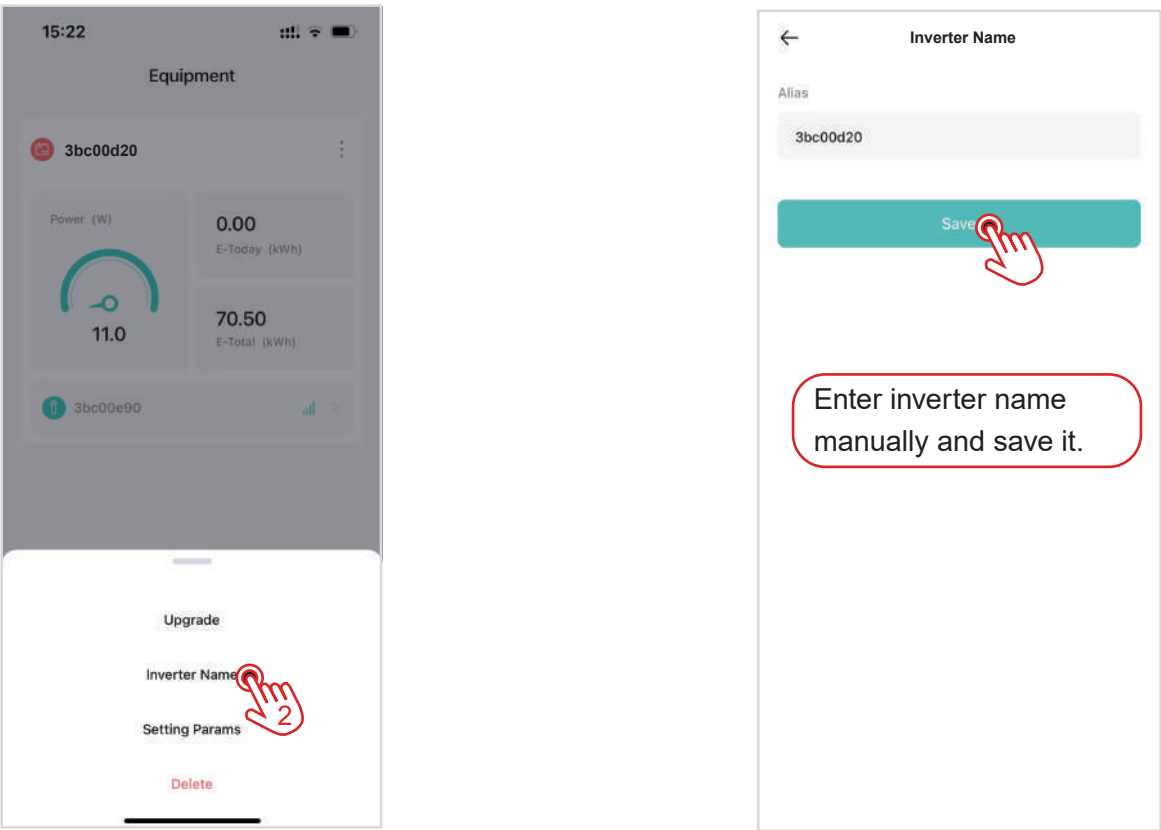


4.3.3 Equipment page

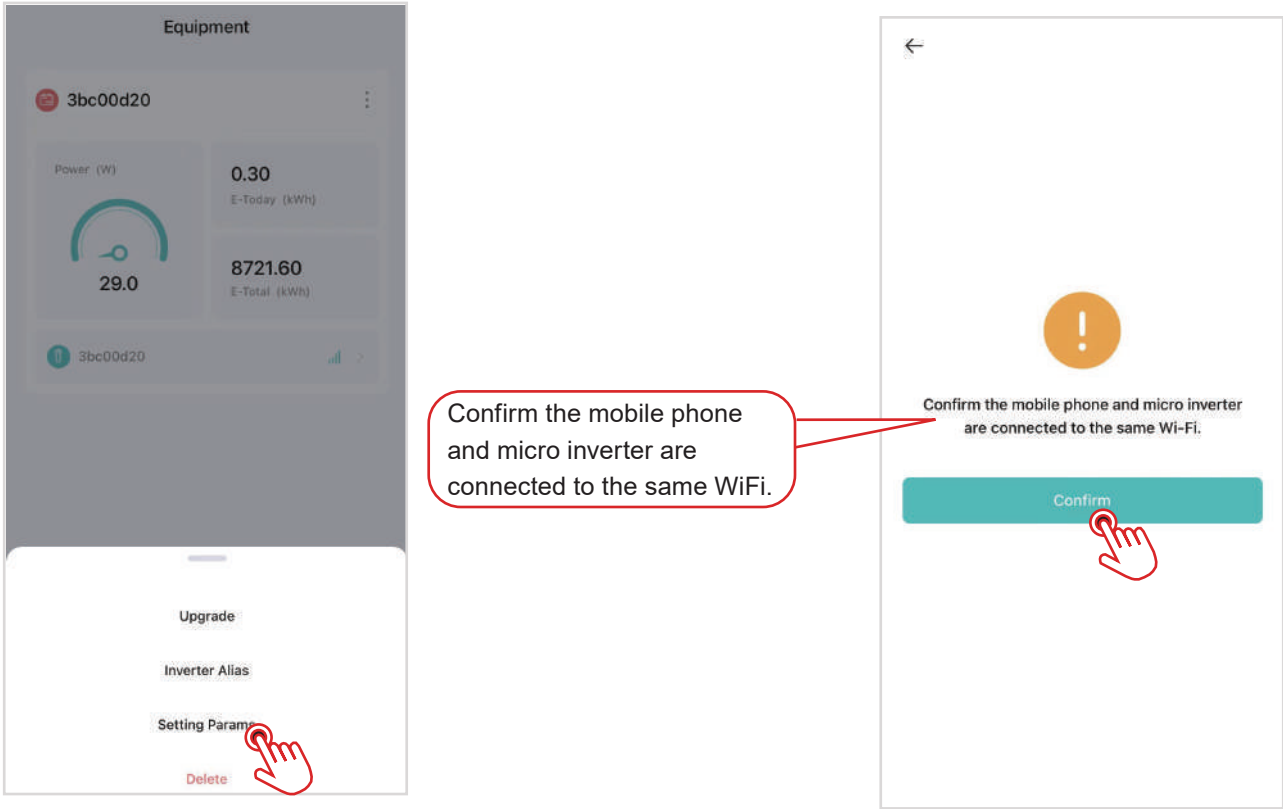
(1) Upgrade the firmware of gateway



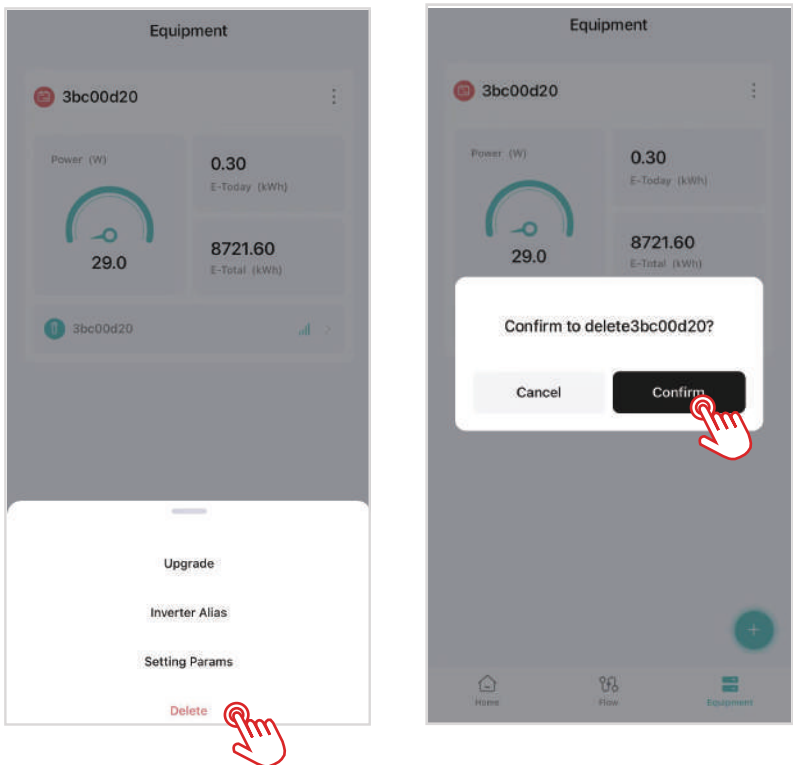
(2) Change inverter name



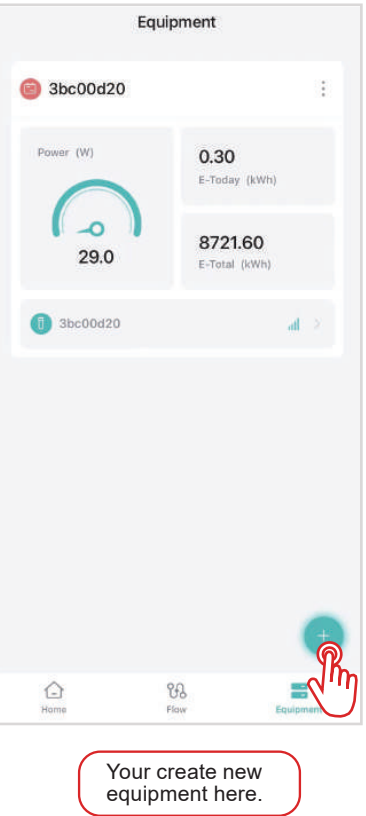
(3) Setting parameters



(4) Delete the equipment

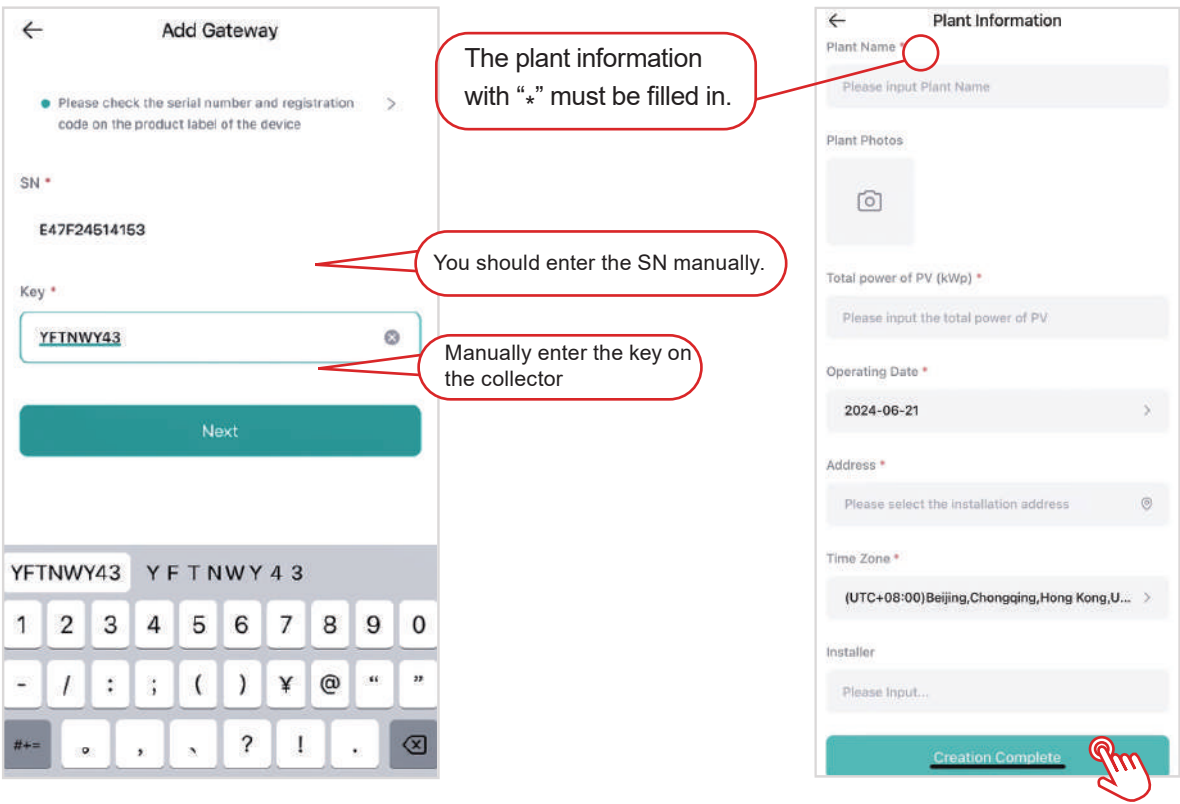
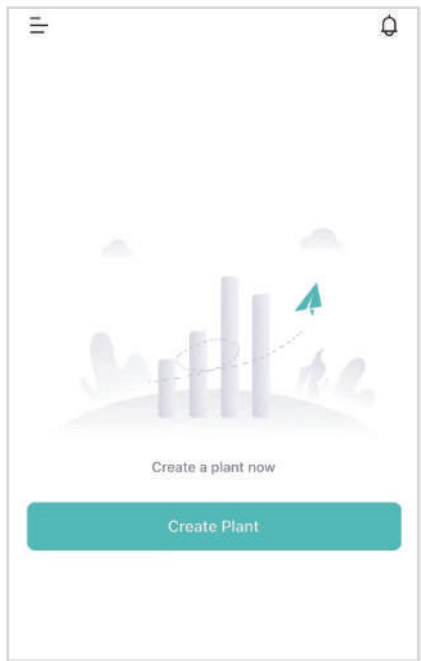


(5) Create new equipment



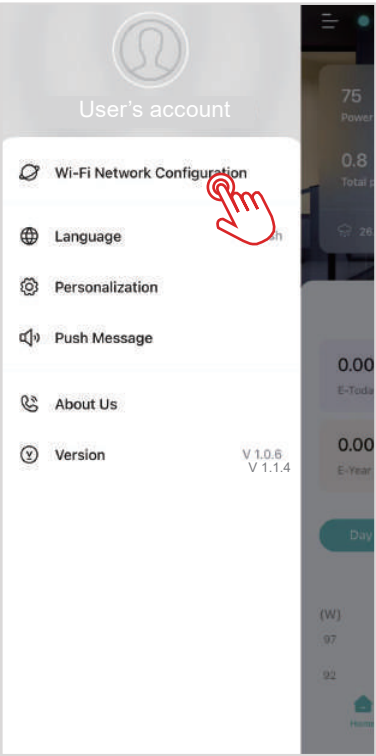
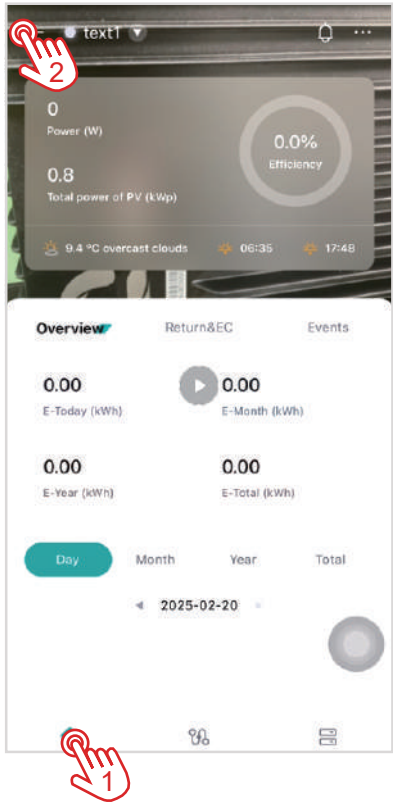
05 Mars/Saturn/Venus Series Operation Guide

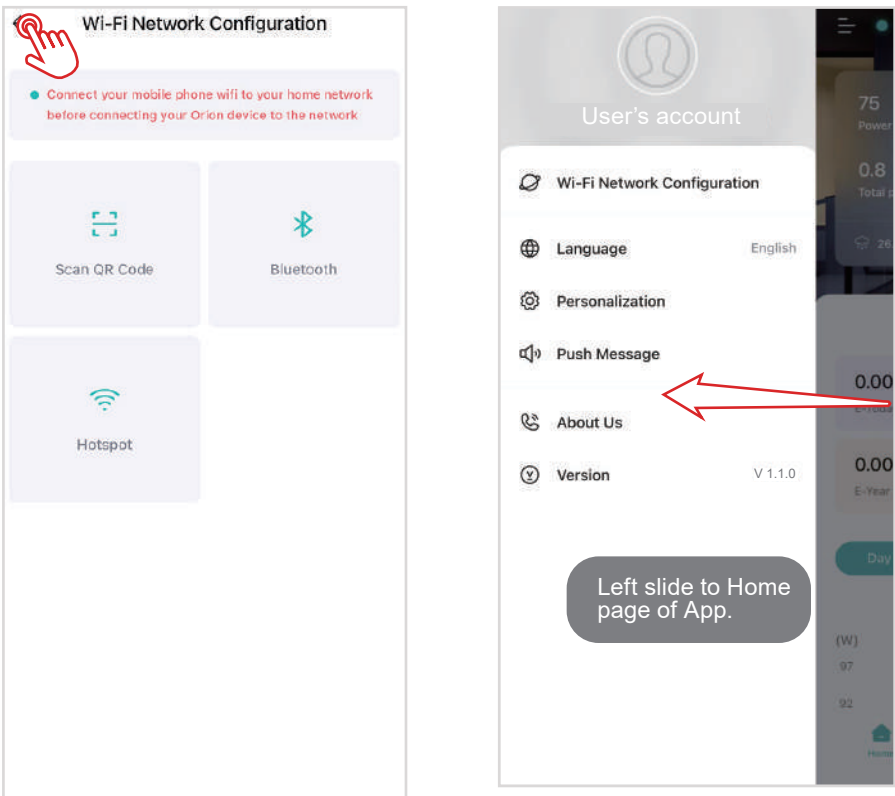
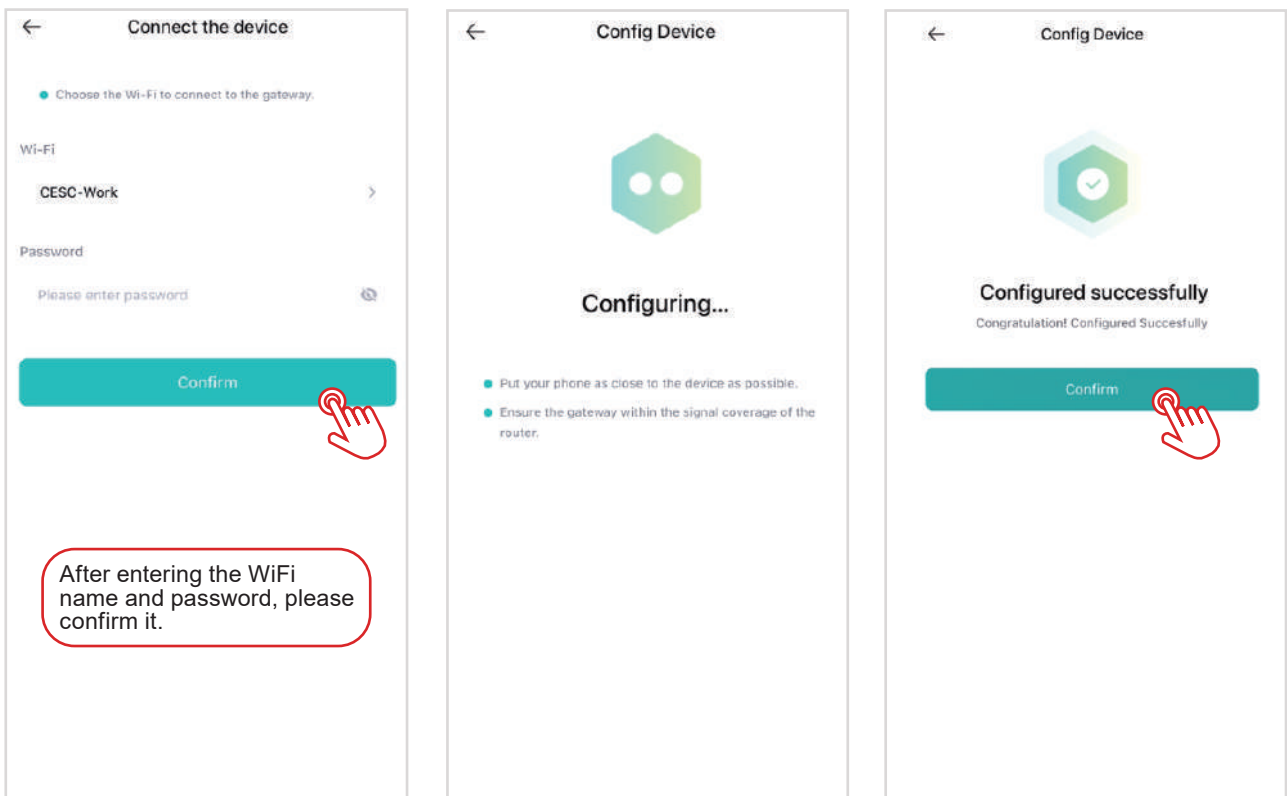
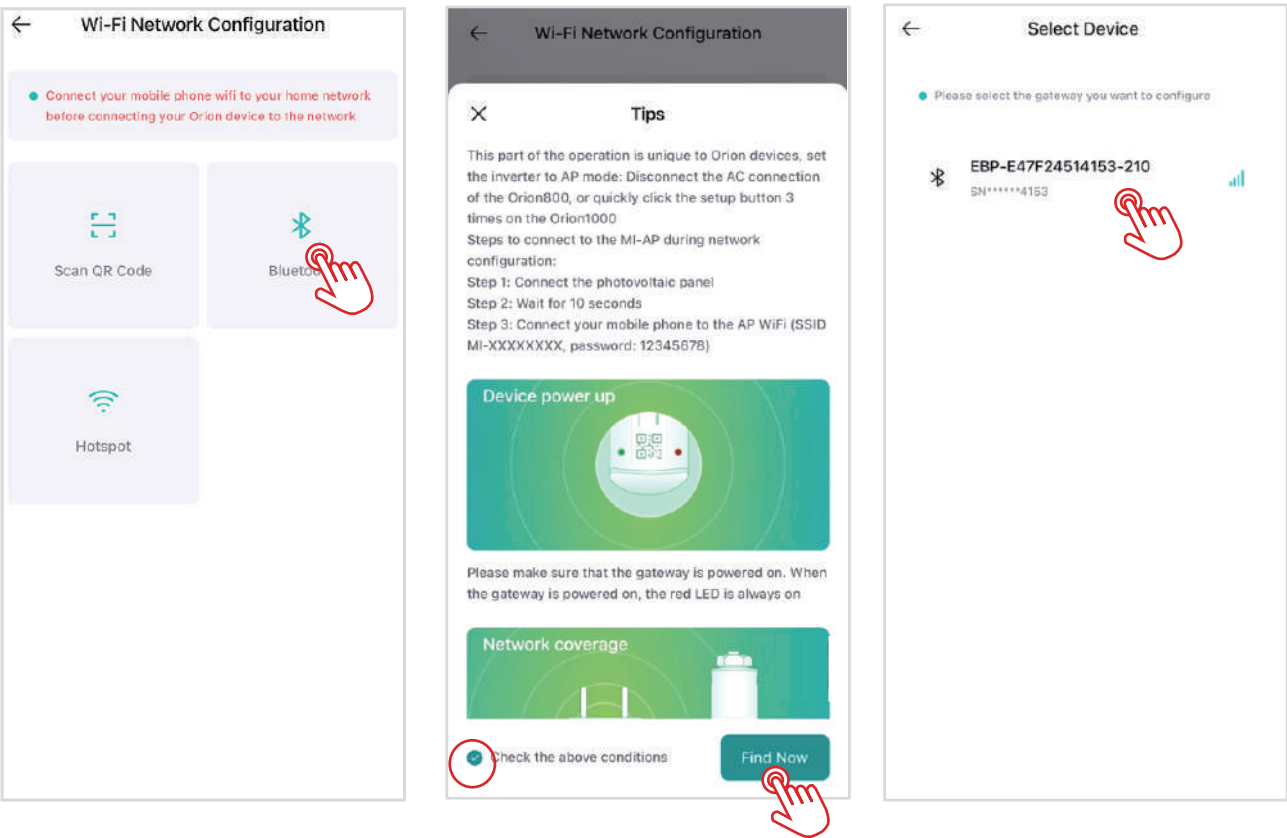
5.1 Creat plant



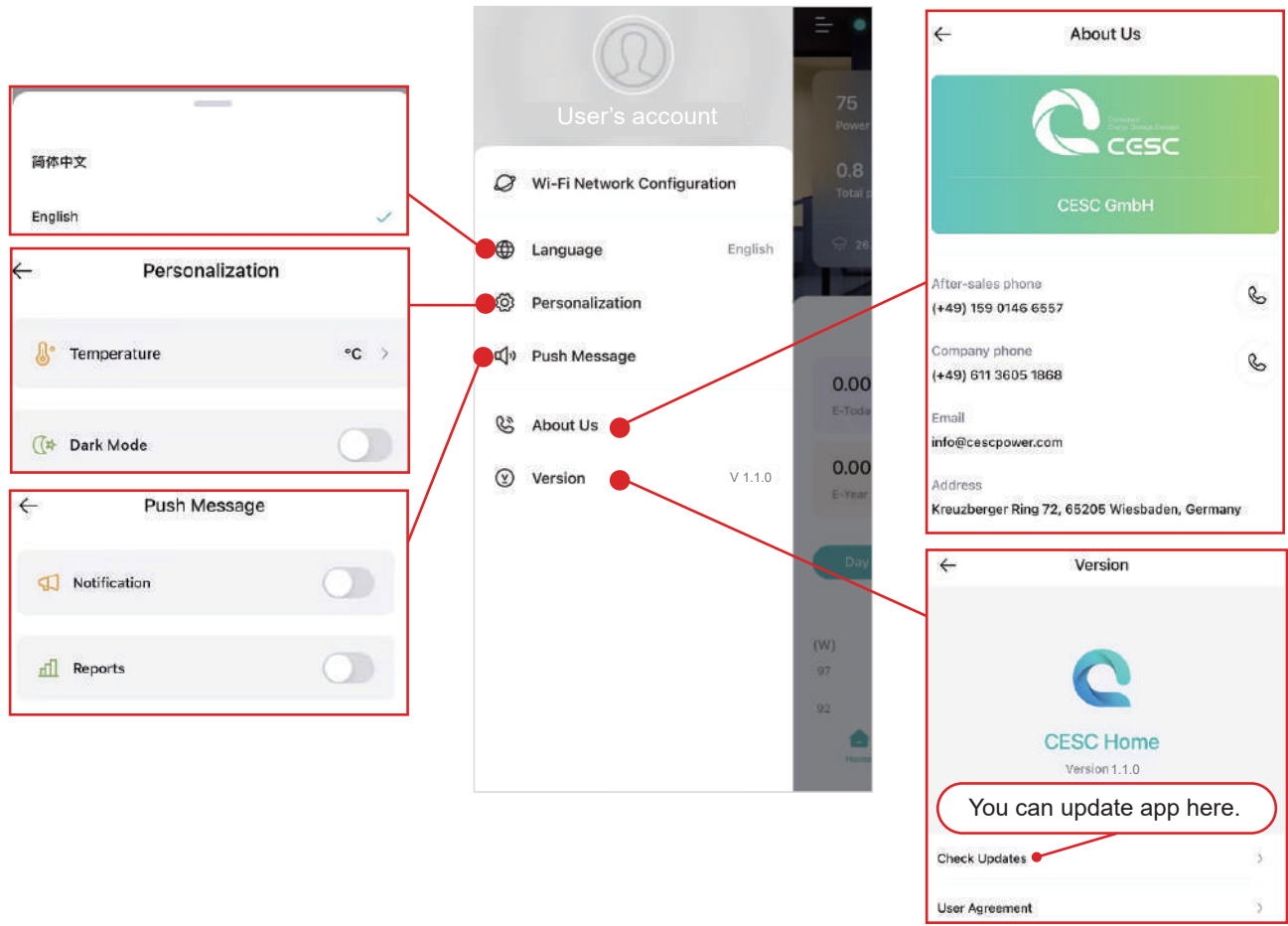
**NOTE**  
After creating successfully, it will return to the main interface automatically.

5.2 WiFi network configuration

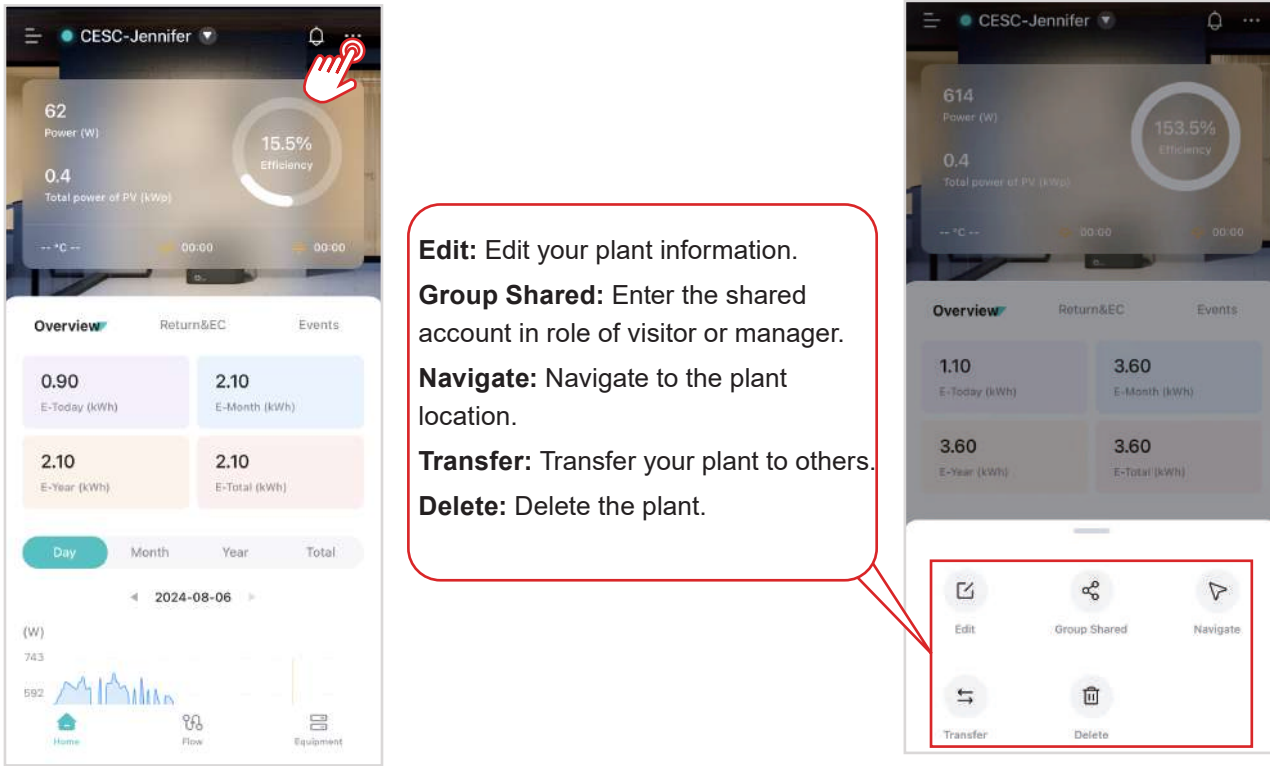
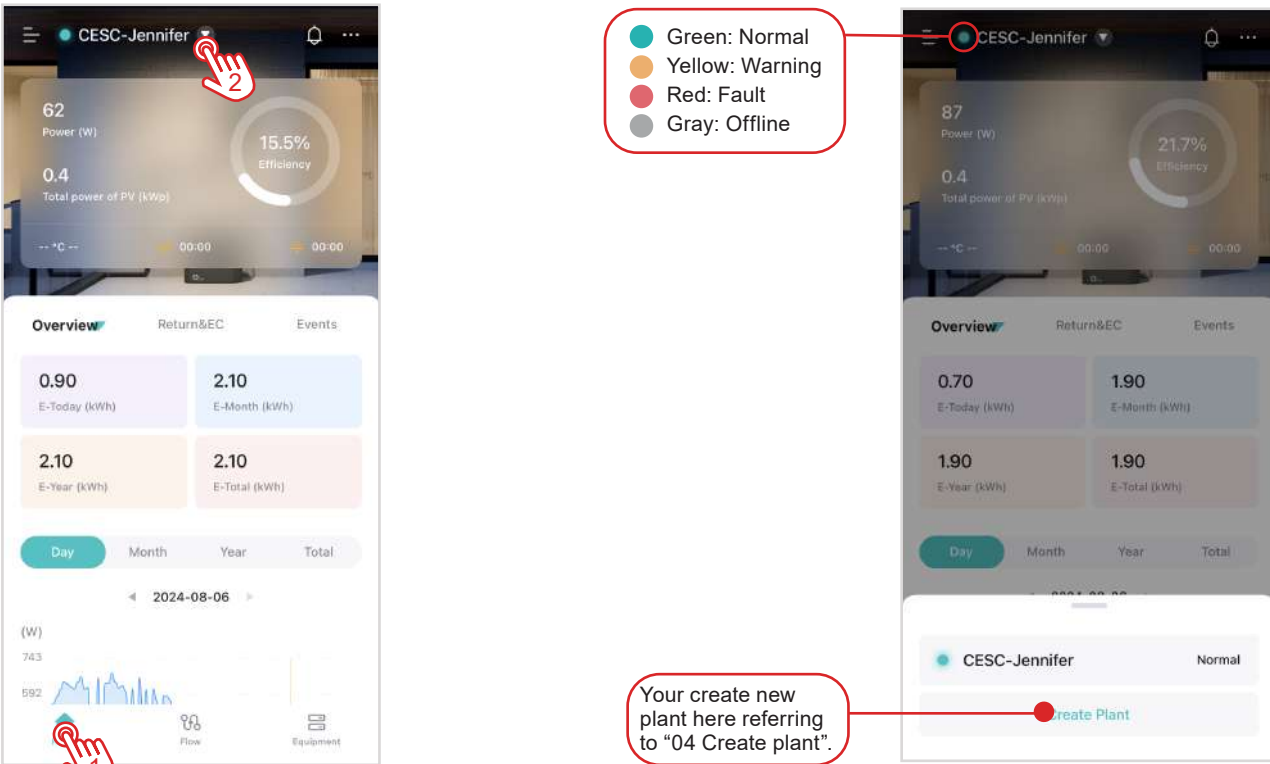




5.3 Introduction of APP

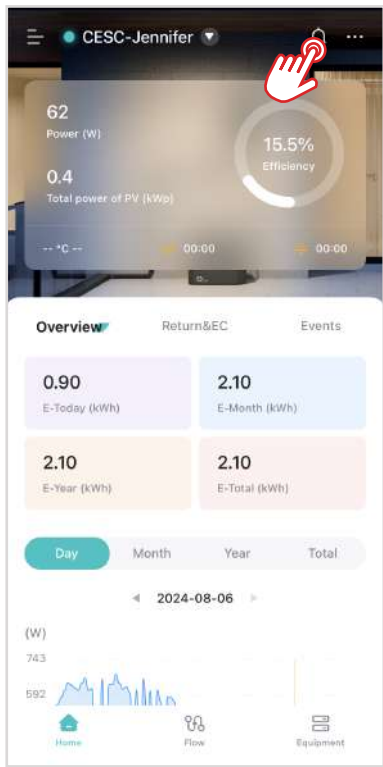


5.3.1 Home page

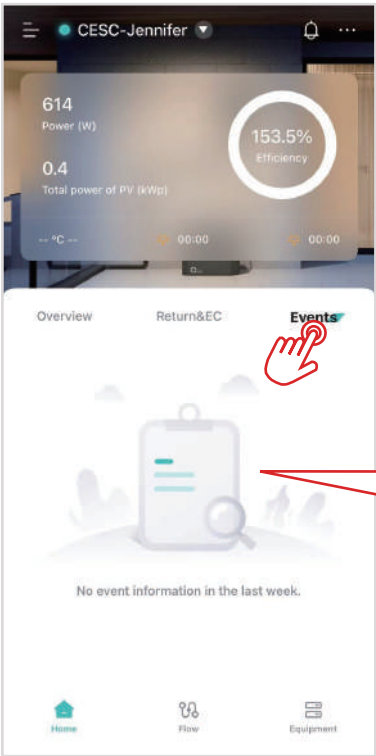
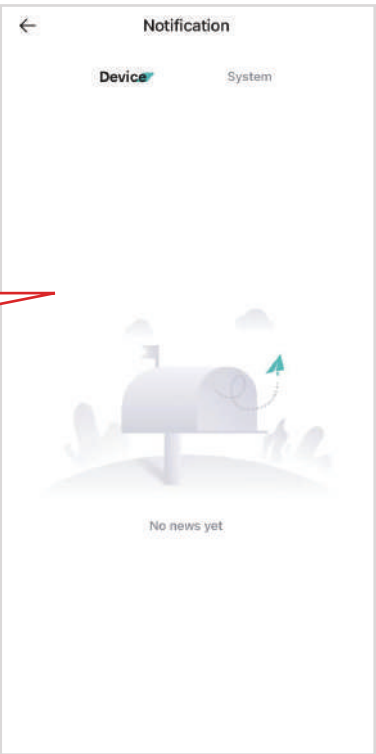


**Edit:** Edit your plant information.  
**Group Shared:** Enter the shared account in role of visitor or manager.  
**Navigate:** Navigate to the plant location.  
**Transfer:** Transfer your plant to others.  
**Delete:** Delete the plant.

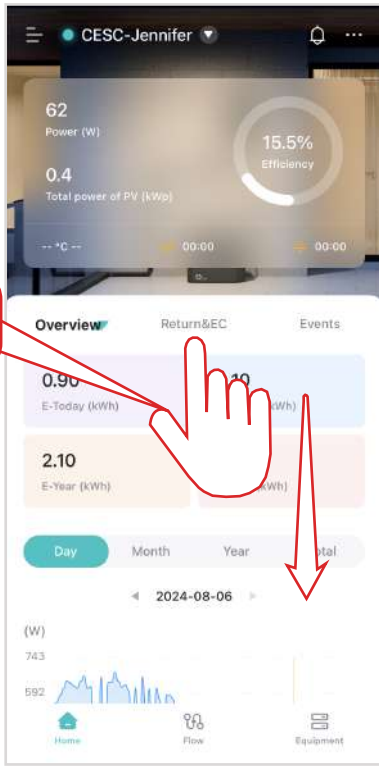




Notifications about the device or system will be reminded here.



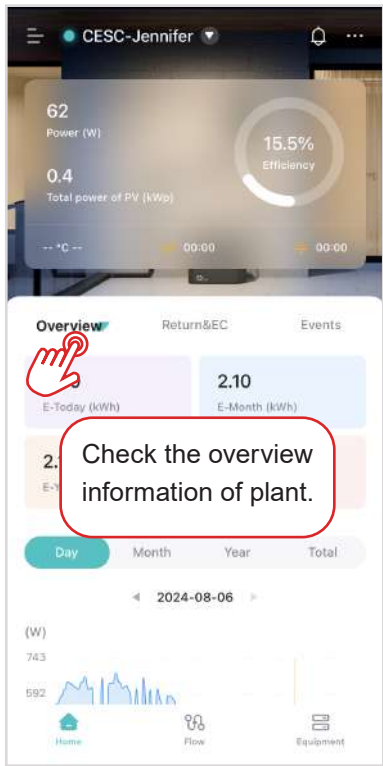
Check events of the App or device.



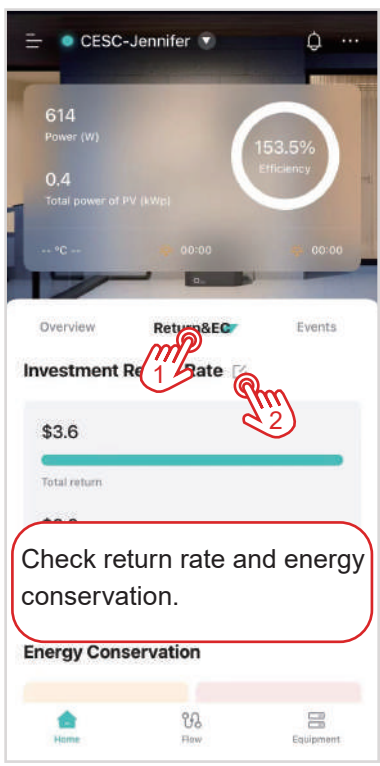
Slide the page down to update the latest data.

### 5.3.2 Flow page

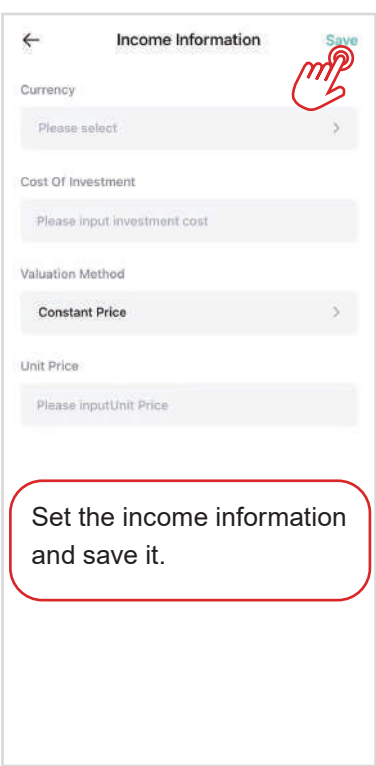
You can check energy flow on **Flow** page.



Check the overview information of plant.



Check return rate and energy conservation.



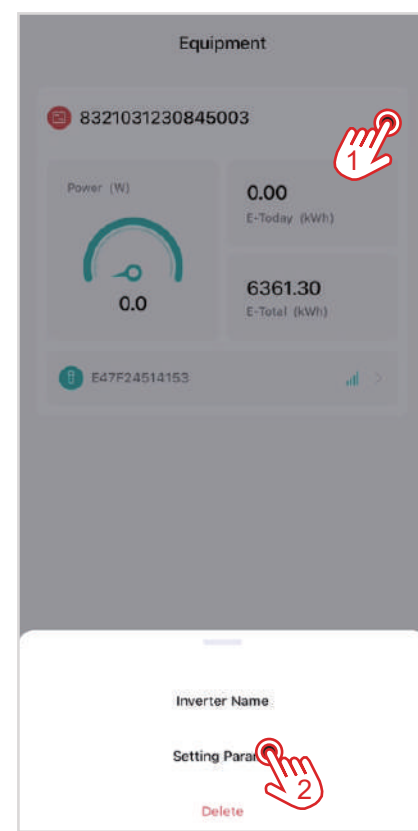
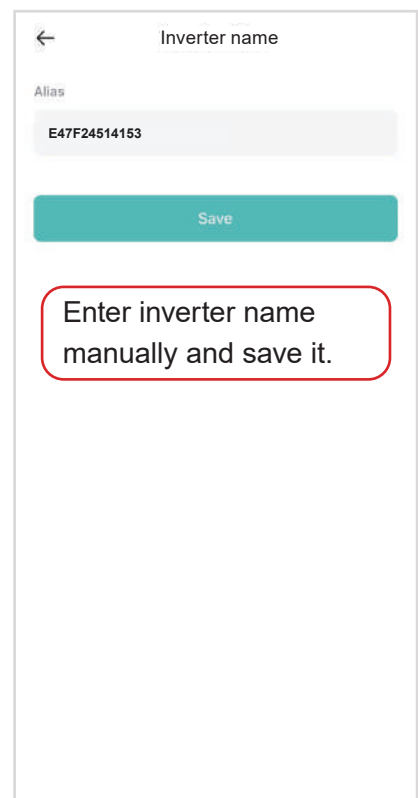
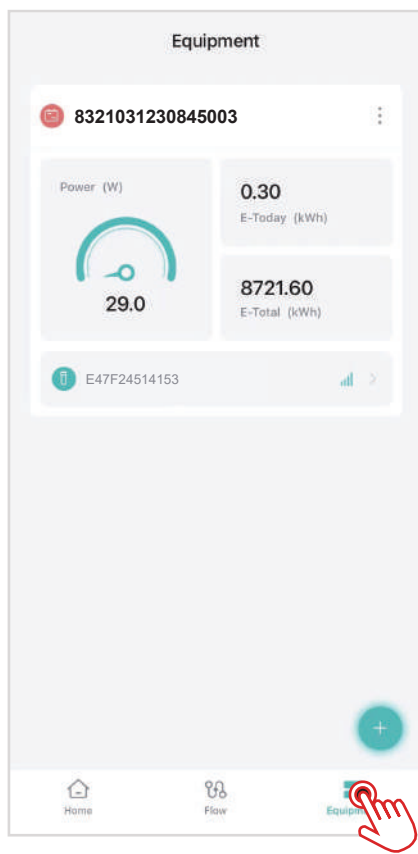
Set the income information and save it.



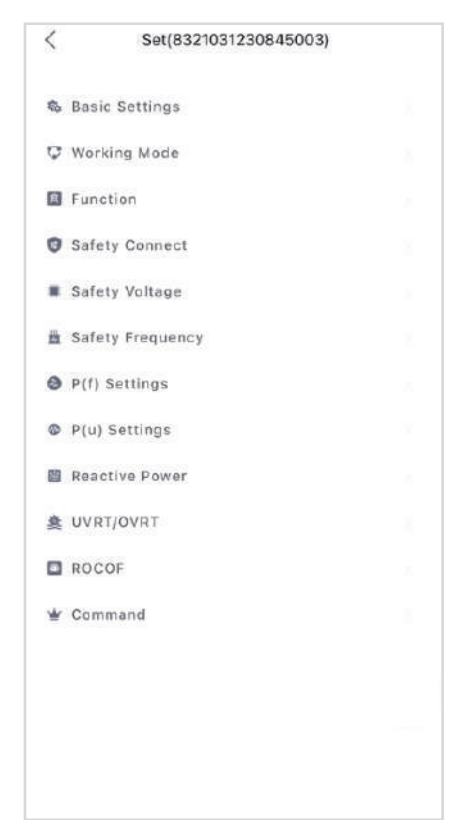
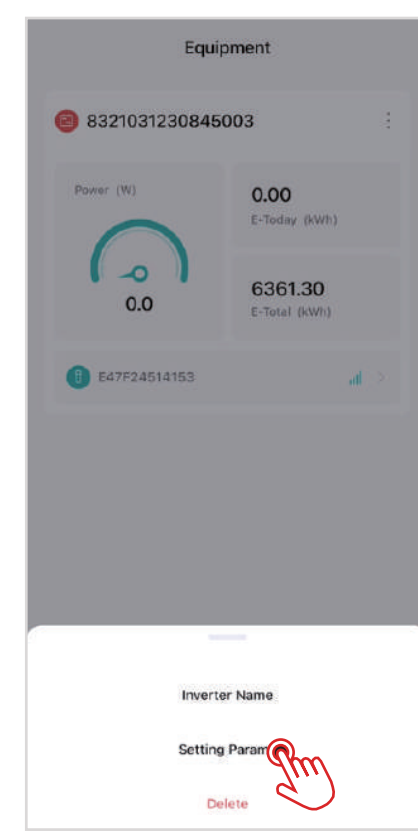


5.3.3 Equipment page

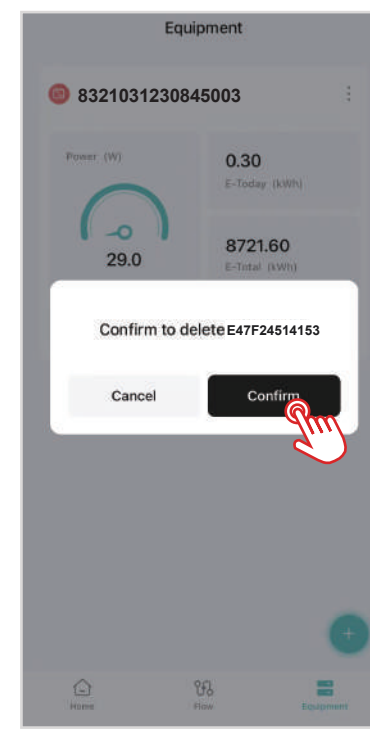
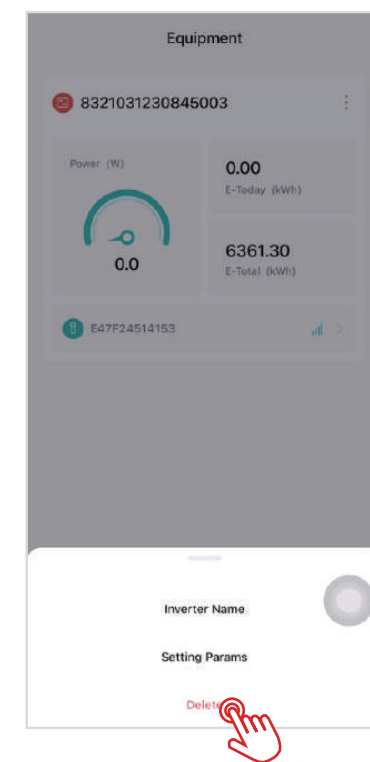
(1) Change inverter name



(3) Setting parameters



(4) Delete the equipment



(5) Create new equipment

